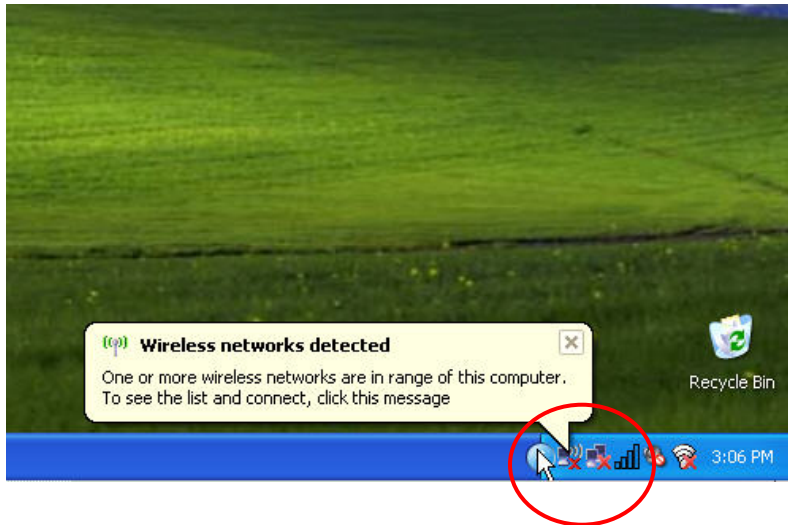


QuickStart Guide: Connecting to NUwave for Dell Windows XP Computers

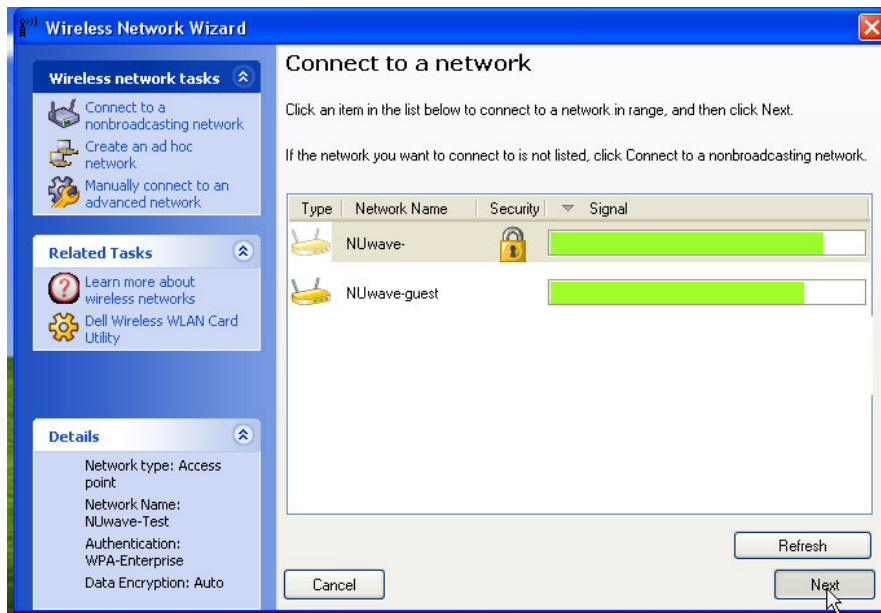
This Quickstart Guide will help you to connect to NUwave, Northeastern University's secured wireless internet network for faculty, staff and students with the special Dell wireless internet connection utility. Students need their myNEU username and password to access the secured NUwave network. Faculty and staff need to use their NU desktop login information to use NUwave.

1. On the bottom right side of the Windows desktop, click the wireless icon in the system tray. Click the message that appears.



2. Click **NUwave** from the list of wireless networks, and then click **Next**.

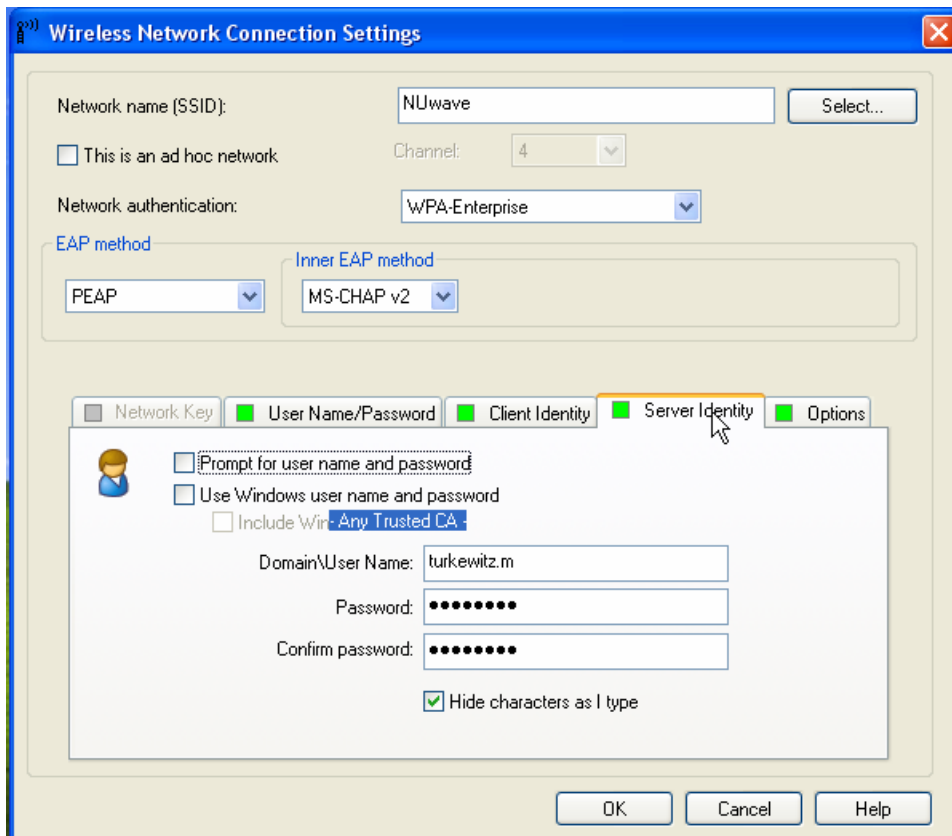
Note: If you see a different wireless connection screen than the one seen below, please use the **Connecting to NUwave for Windows XP Computers** directions instead.



3. In the **Wireless Connection Settings** window, use these settings:

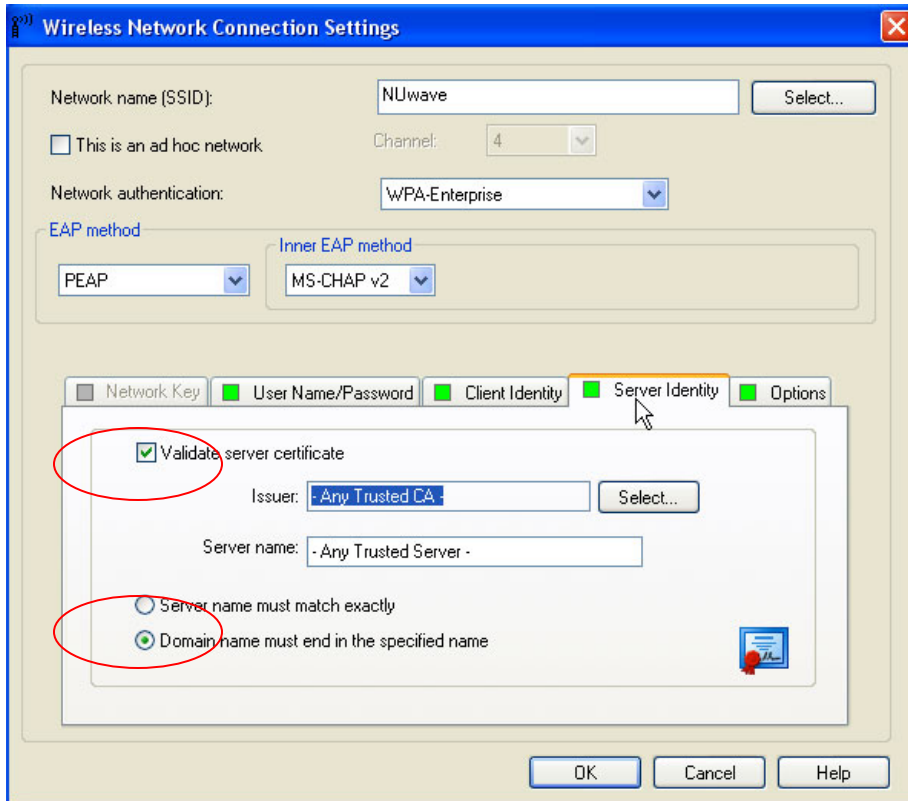
QuickStart Guide: Connecting to NUwave for Dell Windows XP Computers

- **Network name (SSID) :** NUwave
 - **Network authentication:** WPA-Enterprise
 - **EAP method:** PEAP
 - **Inner EAP method:** MS-CHAPv2
4. Click the **Server Identity** tab and use these settings:
- **Domain\User name:** myNEU username (students) NU Desktop username (faculty and staff)
 - **Password :** myNEU password (students) NU Desktop password (faculty and staff) (repeat this in the **Confirm password** field)



5. Click the **Server Identity** tab. Check the **Validate server certificate box**, select **Domain name must end in the specified name**. Click **OK**.

QuickStart Guide: Connecting to NUwave for Dell Windows XP Computers



Now, whenever your computer detects NUwave you will be able to connect automatically. If you have problems connecting to NUwave, please contact the Information Services Help Line at (617) 373-4357(xHELP).